



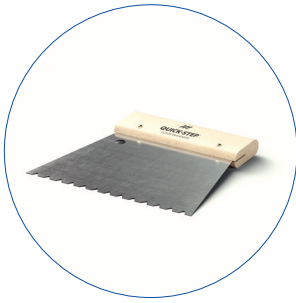
PARQUET GLUE TROWEL

Technical data sheet
English


QUICK-STEP
FLOOR DESIGNERS

General information

Quick-Step Parquet glue trowel is a B11 trowel that ensures an even glue distribution. Ideal for use in combination with Quick-Step Parquet glue.



Contents

Composition

Colour

Wooden handle

Beech

Beech

B11 blade

Strip steel
(Notch width: 6,1 mm, bridge width: 7,9 mm , notch depth: 5 mm)

Silver

Order code

Dimensions

QSWB11

180 x 155 x 15 mm

Applicable for:

- A glued-down installation of all Quick-Step Parquet floors.
- Use in combination with Quick-Step Parquet glue.
- A glue consumption of 1,0 - 1,2 kg/m².

Features

- ✓ **Even glue distribution**
- ✓ **Easy to use**

Installation

Hold the trowel under an angle of 60° with the surface. Apply enough force when in use, only the triangle beads should remain.